



2020-21 SCHOOL REOPENING Draft Plan Overview .

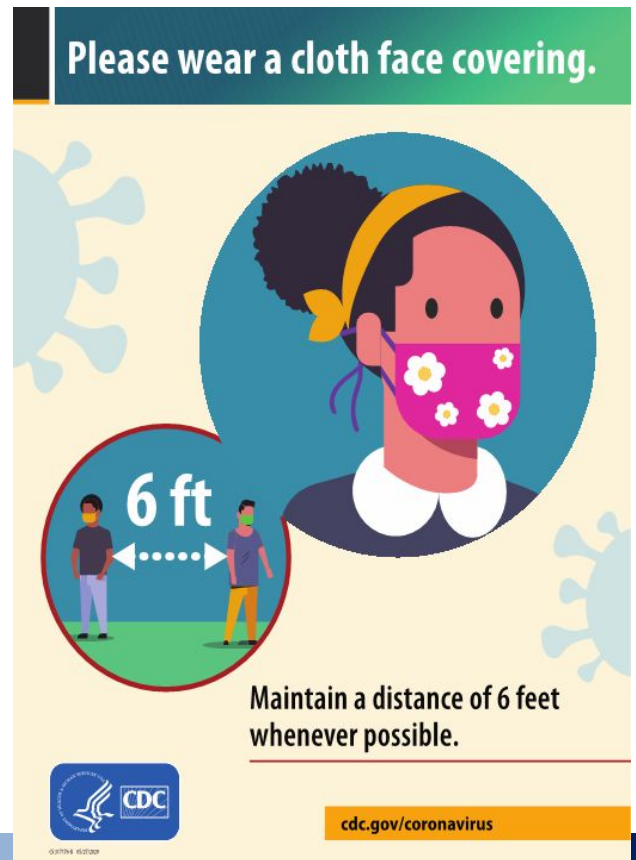
**Presentation for
Lawrence Alliance for Education and the Community**

August 5, 2020

LPS Reopening Plan Goal

To safely return as many students as possible to in-person learning, while maximize learning and supporting our students' holistic needs.

Our plan requires establishing a culture of health and safety, including strategies, practices and protocols focused on accountability to minimize risks for students and staff.



3 REQUIRED PLANS

- FULL In Person
- HYBRID
- FULL Remote

**JULY 31: SUMMARY DUE TO DESE
AUGUST 12: LAE VOTE**

Learning Models: A Continuum



Online Learning
learning remotely through an online platform



Blended Learning
a combination of online and on-site learning



On-site Learning
learning in-person in a school building

FALL 2020 SCHOOL REOPENING

FAMILY SURVEY RESULTS



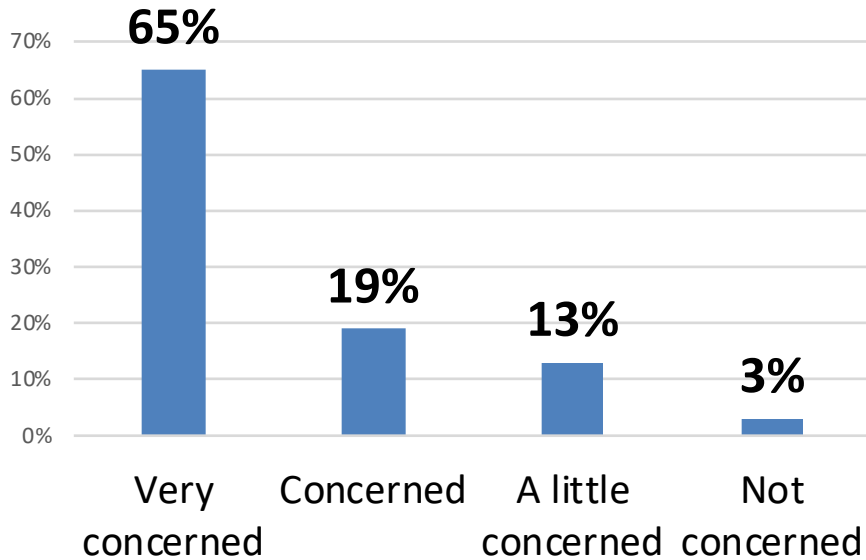
-
- **Survey administered July 13-24, 2020**
 - **Over 5800 responses (41% of enrolled students)**

 - **Respondents represented all schools**
 - **and grade levels PK-13**

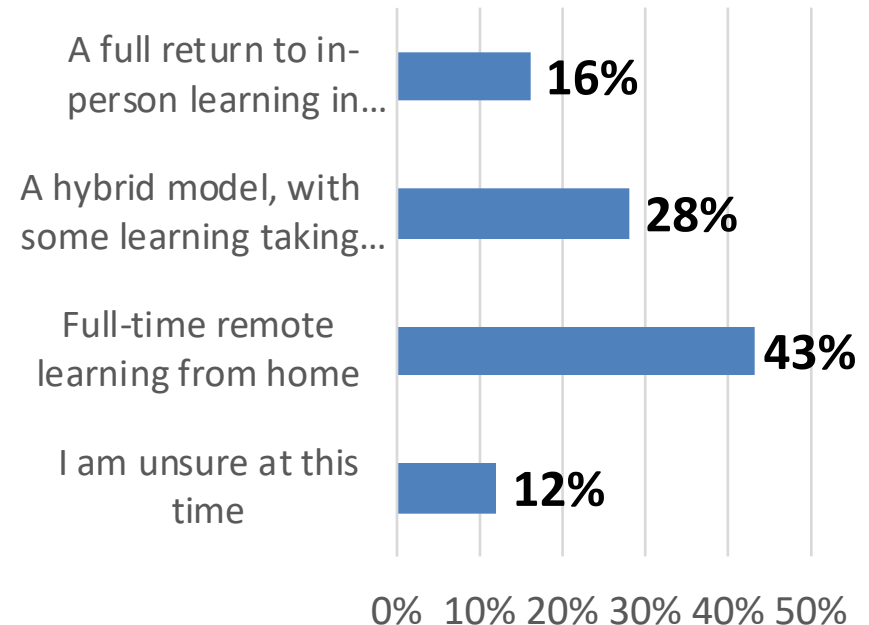
 - **21% Special Education**
 - **44% English Language Learners**

Family Feedback

To what extent are you concerned about sending your child back to school in the fall?

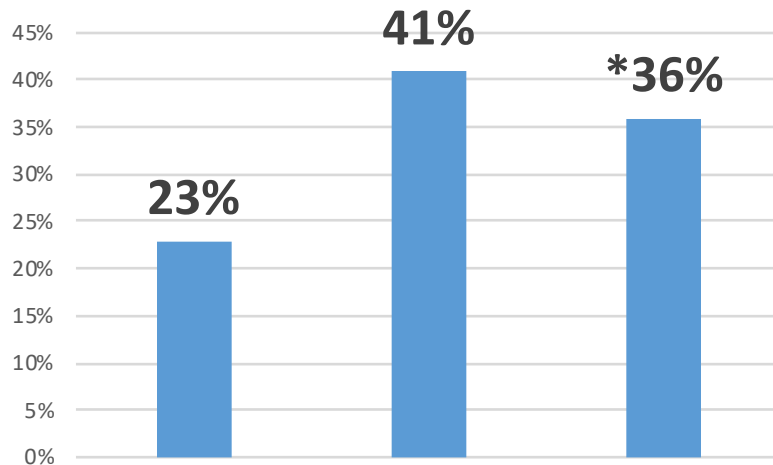


At this time, assuming a continued decline in Covid-19 cases, which learning option would be of most interest to you?

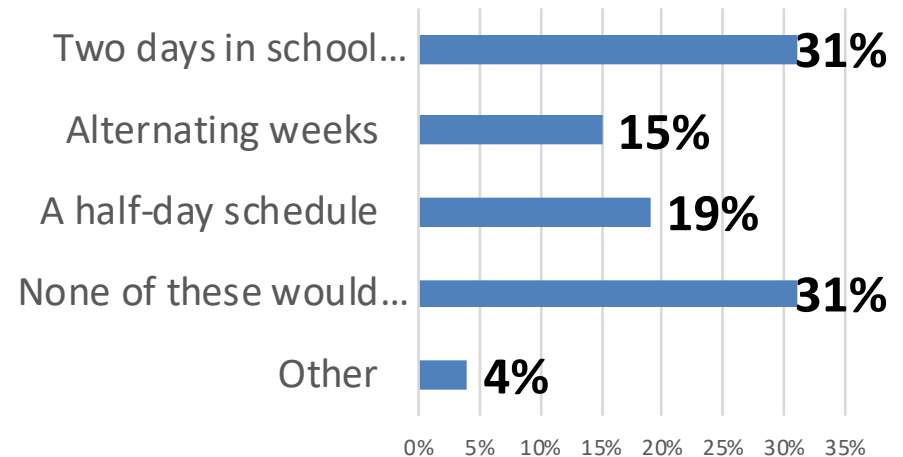


Hybrid Model

How well would a hybrid model work for your family?



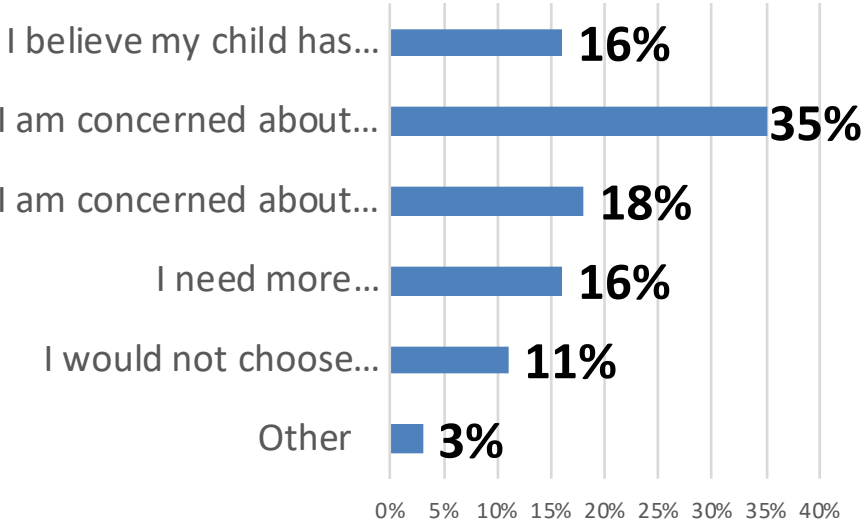
If LPS were to implement a hybrid model, which option do you prefer for your family?



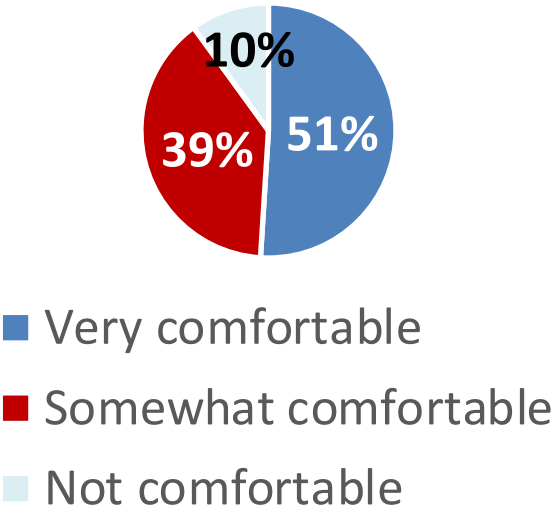
*Of the 36% of respondents that do not feel a hybrid model would work, 77% would only opt for a fully remote model, 11% would opt for a full return to school and 12% are undecided.

Remote Learning

Why would you opt to continue with remote learning at home?

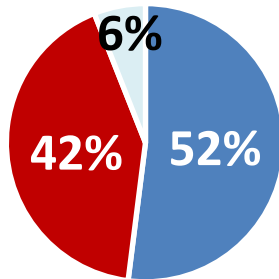


How comfortable do you feel helping your child with learning at home?



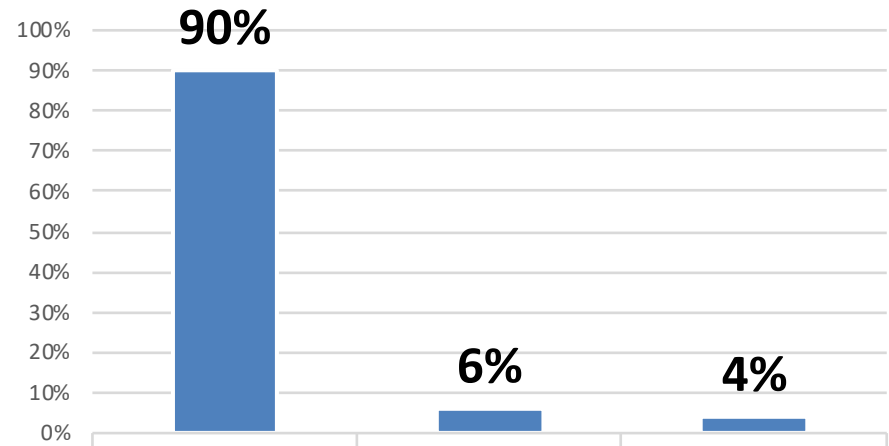
Technology Needs

Does your child have reliable access to a Chromebook, tablet or computer to complete online schoolwork?



- Yes, a shared device
- Yes, a dedicated device
- No

What best describes your child's typical internet access?



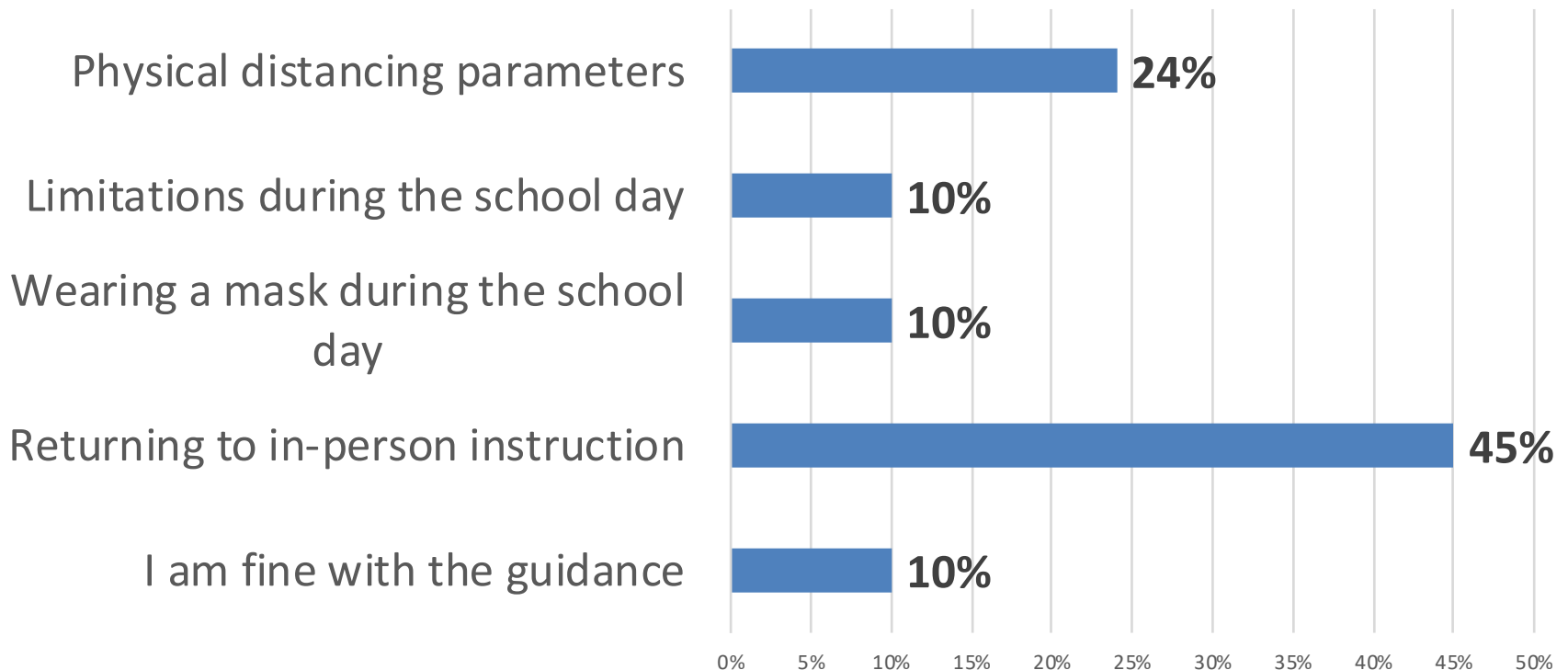
Has reliable internet access Has reliable access, but only through smartphone Does not have reliable internet access

FALL 2020 SCHOOL REOPENING STAFF SURVEY RESULTS

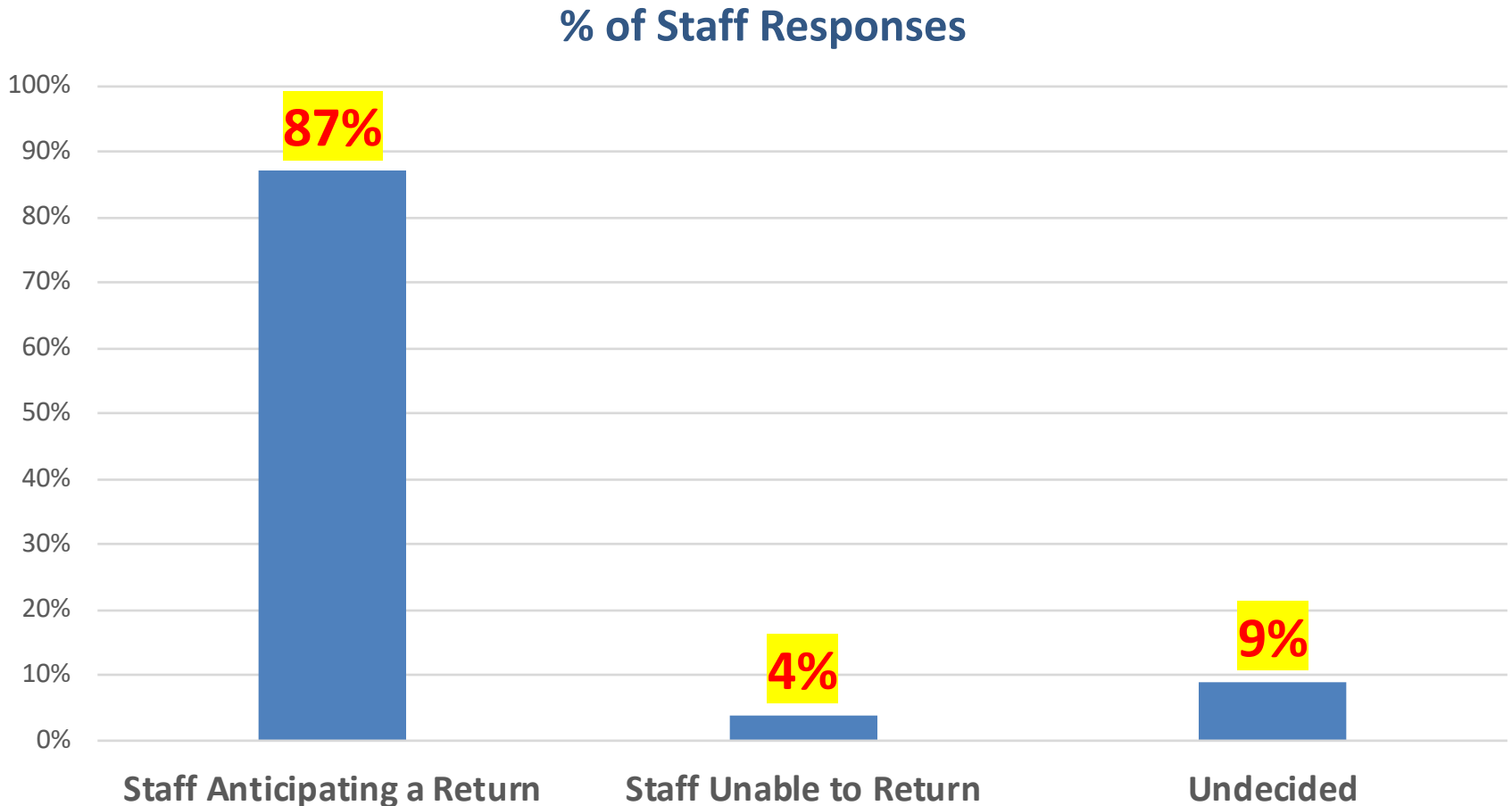


Staff Feedback

Which aspect of the DESE Initial Fall School Reopening Guidance concerns you the most?



Return to In-Person Instruction (Hybrid Model)



Health and Safety Requirements

LPS certifies that the reopening plan meets the current health and safety requirements issued by DESE

Specifically, the following plans are ready:

- Education and Pre-Screenings**
- Infection Control Practices**
- Dismissal Rooms and Procedures**
- Health/Nurse Office Protocols**
- Health Related Needs for Staff**
- Personal Protective Equipment (PPE)**

1. Full IN PERSON Model Considerations

Given the rate of COVID infections in the city of Lawrence, family and staff survey results, large class sizes and DESE/CDC guidelines we **DO NOT** anticipate returning to full in-person learning this fall.

Looking ahead and before considering a full in-person model, the Superintendent, in collaboration with the LAE, city leaders and health officials, will review community transmission data and any school case count data to ensure that the rate of positive cases is well **below 5%** in the city.



2. HYBRID Model Considerations

While we strongly believe that the **hybrid learning model** is the most feasible model for bringing students safely back to school buildings this fall, we also know that a hybrid model can be disruptive to students, families, and staff.

As such, we have worked to streamline student and staff hours by grade-band across the district in an effort to provide consistency and to support Our community.



Hybrid Model Grade Level Continuum

Student Population	Hours/Schedule
Pre-Kindergarten and Kindergarten	AM Session: Monday to Friday 8:00am-10:30am PM Session: Monday to Friday 12:00pm-2:30pm
Grades 1-8	Monday, Tuesday, Wednesday, Thursday and Friday 8:00am-1:00pm* <i>*This is a blend of in-person and remote learning (A/B Schedules)</i>
Grades 9-12	Monday, Tuesday, Thursday and Friday 8:30am-3:30pm* Wednesday 8:30am-11:00am* <i>*This is a blend of in-person and remote learning (AM/PM Schedules)</i>

NOTES:

1. These schedules meet DESE's expectations for structured Time-on Learning of **850 Hours for Grades 1-8** and **935 Hours for Grades 9-12** and a total of **170 School Days**.
2. Grade 1-8 Schedules include enrollment in optional districtwide **Virtual Enrichment Camps** from 2:00 – 3:00 pm.
3. The proposed calendar lists September 16th as the first day of school.

HIGH NEEDS POPULATIONS in the HYBRID Model

→ For **English learners** and **Students with Disabilities**, as well as for several additional groups of high needs students, ensuring the physical, emotional and psychological safety of every student is a priority for our reopening plans.

HIGH NEEDS	MONDAY	TUESDAY	WEDNESDAY	THURSDAY	FRIDAY
PRE-K Kindergarten	AM or PM IN PERSON	AM or PM IN PERSON	AM or PM IN PERSON	AM or PM IN PERSON	AM or PM IN PERSON
Grades 1-8	8:00 – 1:00 IN PERSON	8:00 – 1:00 IN PERSON	8:00 – 1:00 REMOTE	8:00 – 1:00 IN PERSON	8:00 – 1:00 IN PERSON
Grades 9 - PG	8:00 – 1:00 IN PERSON	8:00 – 1:00 IN PERSON	8:00 – 1:00 REMOTE	8:00 – 1:00 IN PERSON	8:00 – 1:00 IN PERSON

NOTE: SEE DRAFT PLAN for complete list of HIGH NEEDS Student Cohorts

3. **FULL REMOTE** Model Considerations

Should there be a necessity for LPS to revert to a **FULL REMOTE LEARNING** Model, it will be critical to consider the lessons learned from the prior emergency closure period.

Ensuring that our plan is well-communicated and providing staff with tools and resources for effective remote learning will ensure that our students are presented with a program that supports student growth and achievement aligned to grade specific content standards as outlined in the MA Curriculum Frameworks.

In the event that the district needs to employ the **FULL REMOTE LEARNING model**, additional devices will be deployed to ensure all students have access to a device during school hours. The student hours (8:00am-1:00pm) will remain the same in the full remote model.

Family Preference for a **FULL REMOTE** Model

All LPS families will have the option of **full-time remote learning** regardless of the model we implement this fall. This requirement, combined with the possibility – perhaps even likelihood – that the virus could force future school closures, makes a robust, comprehensive remote learning model imperative.

To enroll a student in full remote learning, families must complete an Enrollment Form. This form will be available starting **August 7th**.



Next Steps

- Collect and review additional **FEEDBACK**
- Host Superintendent's **VIRTUAL FORUMS** to engage families, students, and community partners
- Submit a **FINAL PLAN DRAFT** to DESE after LAE Vote (anticipated August 12th)
- Launch the Return to School **HOTLINE**
(978) 722-8040
- Release **VIDEOS** showing what school will look like in the fall and the steps we are taking to make re-entry safe, productive and welcoming

Feedback Forums

Monday, August 10th	
Nurses/LPS	12:00 - 12:50
Partners	2:00 – 2:50
ELPAC/SEPAC/MAC	3:00 – 3:50
Virtual Coffee Hour - Early Childhood Families	4:00 – 4:50
Virtual Coffee Hour - All Families	6:00 – 7:00
Tuesday, August 11th	
Café/Custodial In-person meetings	9:00 – 1:30
Clerks, Exempt, BBE's, LTS, Paras, Assistant Principals, Deans	2:00 – 2:50
Virtual Coffee Hour - HS Students	3:00 – 3:50
Virtual Coffee Hour - Elementary Families	4:00 – 4:50
Virtual Coffee Hour - High School Families	5:00 – 5:50
Wednesday, August 12th	
Teachers	10:30 – 11:30
Virtual Coffee Hour - Middle School Families	4:00 – 4:50

Thank
you

